

CONNECTIONS



CONN-FLEX MODULAR SYSTEM

A complete and versatile range of flexible sanitary connections

TRI-CLOVER FERRULES AND ACCESSORIES



COMPACT MOUNTING COLLAR



**Cost effective
Flexible solutions**

CONN FLEX MODULAR SYSTEM



APPLICATIONS:

- To compensate for any mis-alignment (left-right / up-down) between mating elements
- To absorb vibration
- To introduce flexibility into a system
- To connect Tri-clover ferrules of different sizes
- Simple and quick way to make shorter or temporary connections

KEY FEATURES:

- They are attached to the host installation by means of a standard tri-clamp
- They include a stainless steel bearing ring to protect the silicone material from damage by the clamp, but in such a way that the bearing ring can easily be removed for cleaning
- Conical adaptors are available to connect different TC sizes
- Made from Silicone FDA 177.2600 – EN1035/2004 approved

	CON-FLEX				CONICAL ADAPTORS		
	4"	6"	8"	10"	4" - 6"	8" - 10"	10" - 12"
Available heights	75 mm	100 mm	100 mm	100 mm	75 mm	75 mm	150 mm
	125 mm	150 mm	150 mm	150 mm			

NOTE : All tri-clover connections are manufactured to conform to ASME/BPE dimensional tables. For other specifications or customised dimensions please contact us for more information.

CONN FLEX – JOINT SOLUTION

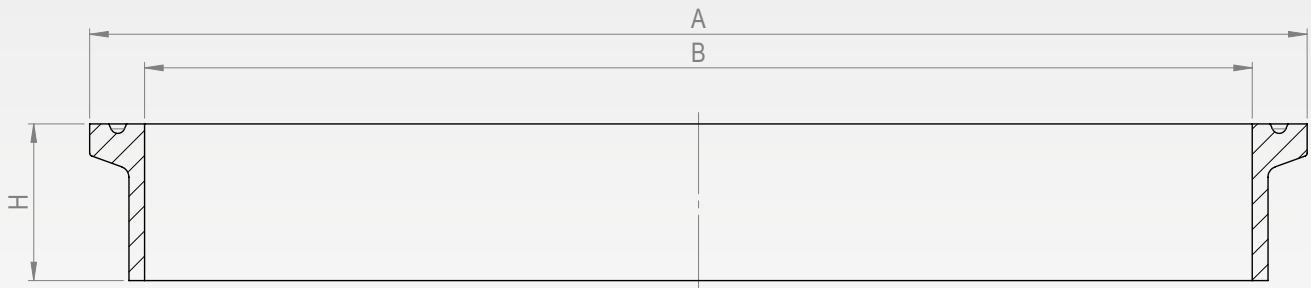
A unique lightweight sanitary joint enables the user to achieve a range of stack up heights by connecting two or more Conn-flex elements
The JOINT KIT (joint ring and special clamp) is sold separately and gives complete flexibility.



TC WELDING FERRULES

Our Oyster branded sanitary valves are designed to connect to the host installation by means of Tri-clover (TC) clamps. This is a widely used and well recognised standard which combines optimal sanitary characteristics with practical convenience. We offer a full range of TC accessories including:

- Welding ferrules
- Gaskets
- Clamps
- End Caps

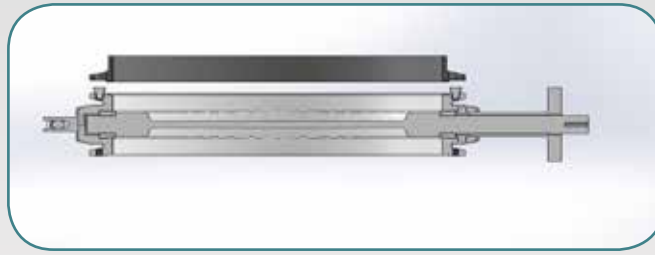


AVAILABLE TYPES AND SIZES mm	2" - DN50	3" - DN80	4" - DN100	6" - DN150	8" - DN200	10" - DN250	12" - DN300
ASME / BPE							
A	64.0	91.0	118.8	166.7	217.7	268.0	319.3
B	47.5	72.9	97.4	146.9	197.1	247.2	298.0
BS 4825-3							
A	64.0	91.0	119.0	167.0	217.4	268.0	319.0
B	47.6	73.0	97.6	150.0	200.0	250.0	300.8
DIN32676							
A	64.0	106.0	119.0	183.0	233.5	N/A	
B	50.0	81.0	100.0	150.0	200.0		
ISO2852							
A	77.5	106.0	144.4	183.0	233.5	N/A	
B	56.3	84.3	109.7	163.1	213.9		
H	21.5mm	21.5mm	28.0mm	28.0mm	28.0mm	28.0mm	28.0mm

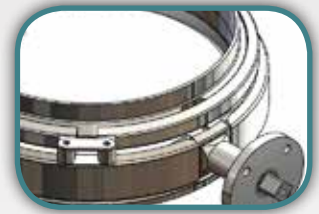
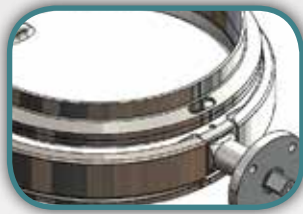
STANDARD FEATURES:

- TC CLAMP >6" ARE LIGHTWEIGHT TYPE
- TC GASKETS AVAILABLE IN BOTH SILICONE AND PTFE
- TC AND END CAPS IN SS316 L
- CLAMPS MADE IN SS304

MOUNTING COLLAR - COMPACT



The compact mounting collar is an improvement on the standard TC connection



Main features :

- The Compact Mounting Collar one operator can locate and secure the valve in position without assistance, and it is particularly suitable where valves are located in positions that are hard to get at.
- **Male / Female** solution
- Can be supplied with a **o-ring** to ensure tightness
- Materials mounting collar - AISI 316L, C22
- Materials o-ring - VMQ; PTFE; FEP O-SIL; FFKM

Available sizes: DN100-DN150-DN200-DN250-DN300

ACCESSORIES

WE ALSO OFFER A SERIES OF TC COMPATIBLE COMPONENTS SUCH AS:

FINGER GUARDS
HOSE FERRULE



ValvEngineering Srl

Via di Coselli 23/25 – 55012 Capannori - LUCCA - Italy
• TEL +39 0583 378587 • FAX+39 0583 1553006
• P.IVA IT02090150463

DISTRIBUTED BY:

