

KIKUSUI[®]



AQUARIUS G-J

(DC MODULE)

High Speed Rotary Tablet Press

AQUARIUS G-J is the latest press from KIKUSUI designed for pharmaceutical production. Features include, simple operation and maintenance, easy access, quick turret exchange. All in a very rugged, reliable and compact design that KIKUSUI has always been known for.

New Key Feature, AQUARIUS G-J has multi process mode capability, REGULAR & DC mode. It can produce not only regular tablets but also Tablet in tablet products on same machine. A simple module change or turret removal quickly changes it's capabilities. Step by Step guidance on the OIT ensures proper set up.



TURRET EXCHANGEABILITY

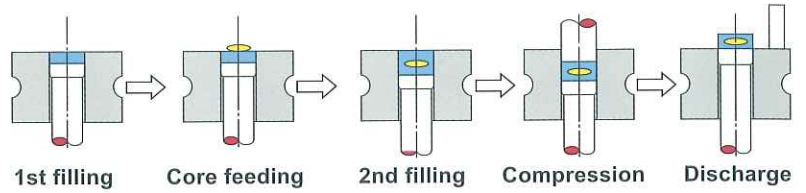


DC MODULE

DRY COATING MODULE

DC MODULE DESIGN has been developed to allow DC production on Regular AQUARIUS G-J. It includes Core bowl, Core spring, Core inlet, Core disc and a Coreless monitoring system. Granulation is loaded into two separate hoppers through Closed feeders, Core disc places the cores into dies after the first feeder. The disc can be adjusted with two manual handles to meet core centering. The second feeder then applies the final fill to meet the tablet specs.

Automatic core centering will be available with CCD camera as optional item.



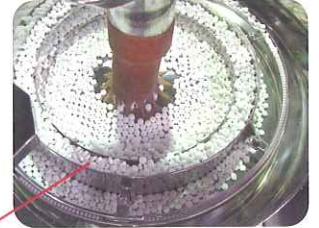
Core disc



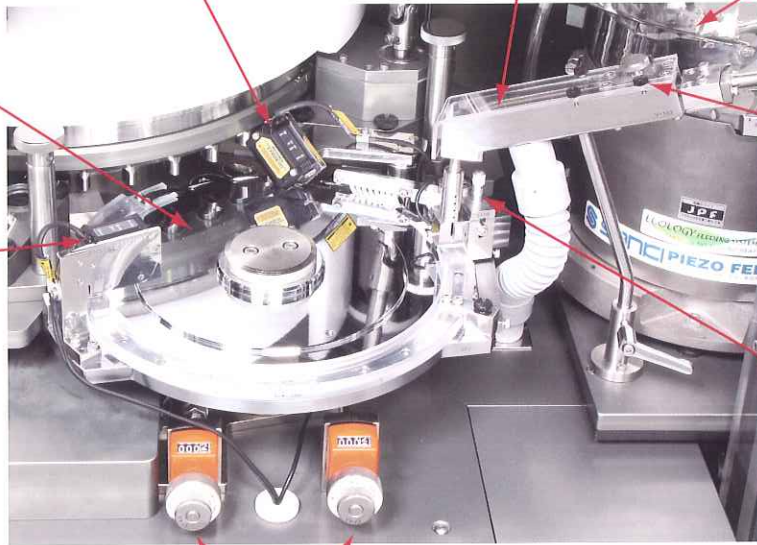
Inspection2



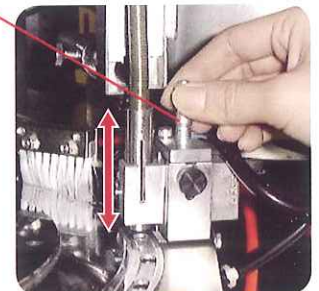
Core spring



Core bowl



Spring holder



Core tube height adjuster



Inspection1



Piezo-electric element
Core feed drive unit

Core disc positioning handles



Two Powder hoppers

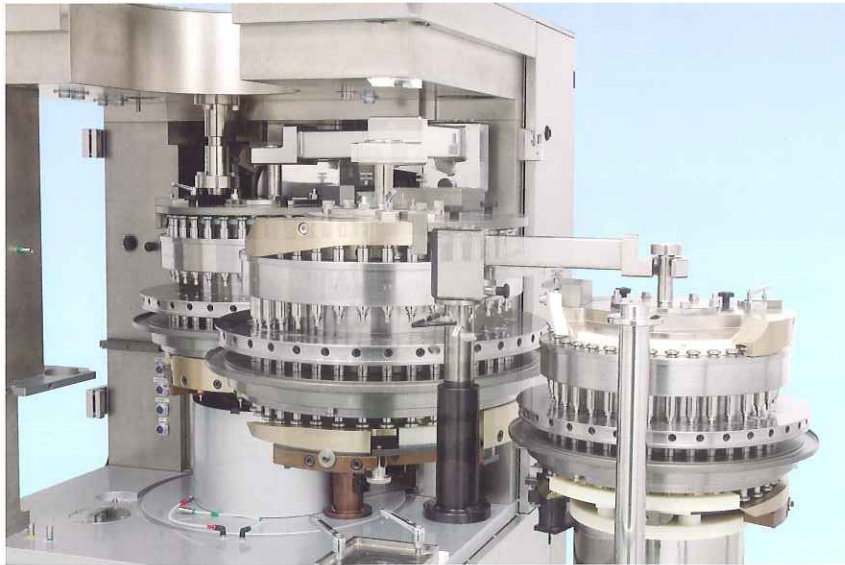


Induced Die Feeder



Core feeder sliding design

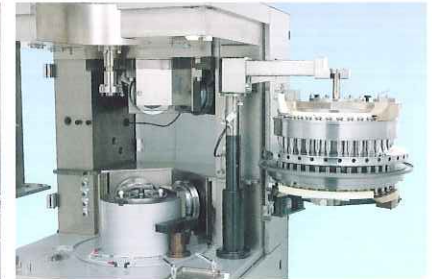
TURRET EXCHANGEABILITY



DC TURRET INSTALLATION PROCESS FLOW		COMPLETED
PREPARATION1	SOP	
PREPARATION2	SOP	
TURRET SETUP	SOP	
TURRET SWING IN	SOP	
COUPLE (LOWERING)	SOP	
SWING ARM DISMOUNT	SOP	
UPPER ROLL BASE SLIDE IN	SOP	
SENSORS AND TUBES FITTING	SOP	
DC MODULE INSTALLATION	SOP	
DAILY PARTS INSTALLATION	SOP	
DC CABINET DOCKING	SOP	
CORE FEEDER SLIDE IN	SOP	
ACCESS		CALL CENTER

AQUARIUS G-J provides turret exchangeability as a Standard Feature. The TURRET ARM SWINGING SYSTEM makes turret change a quick and simple task. The entire process can be accomplished in less than 20 minutes. This feature allows for the use of TSM-B and TSM-D tooling in the same machine, as well as making the machine very easy to clean after use. The Turret Exchange SOP is displayed on the OIT to prevent any operator mistakes. This system provides Step-by-Step instructions with safety interlocks, this allows the operator to quickly and easily exchange the turret.

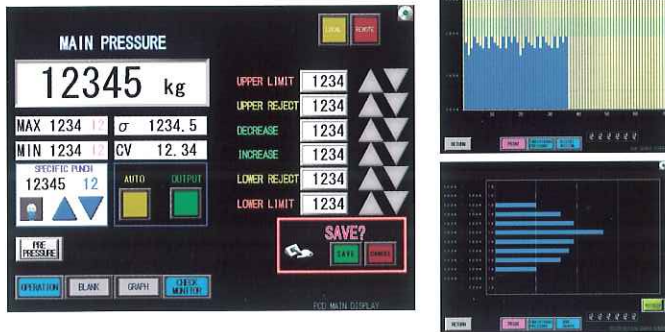
MULTI PROCESS MODE CAPABILITY



AQUARIUS G-J has multi process mode capability, REGULAR and DC mode (Tablet in tablet). It can produce not only regular tablets but also Tablet in tablet products on one machine. To change the mode, you just simply replace the module & DC cabinet in addition to exchange the turret. Step by Step guidance on the OIT ensures proper set up.

PCD-2 & SINGLE REJECTION

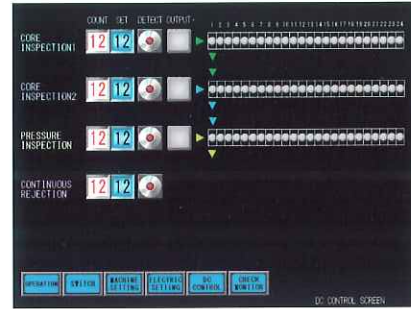
There is a proportional relation between tablet weight and compression force when tablet thickness remains constant. KIKUSUI's automatic weight control system PCD-2, applying to this theory, controls and stabilizes the tablet weight. PCD-2 receives the compression force wave from the load cell at the main pressure roll, digitalizes that wave and compares it to Pre-Set values and makes any necessary adjustments. Additionally, the reject system is driven by air, which ensures single tablet rejection, which minimizes the total number of rejected tablets.



DC CONTROL

AQUARIUS G-J is available with a User Friendly touch screen operator control panel to meet your operation needs. The OIT allows you to operate both Regular and Dry Coating mode. The DC control monitors all tablets compressed and rejects Coreless tablets into a separate container.

It is instrumented with a simple Data Acquisition system to collect and display information on Pre & Main compression force and batch reports.



BASIC SPECIFICATIONS

Model & Type	AQUARIUS G-J / Dry Coating Mode	
No. of Stations	45	36
Type of tooling	TSM-BB	TSM-B
Max pressure(kN)	Pre 100 / Main 100	Pre 100 / Main 100
Max. tablet dia. (mm)	11	16
Turret speed (rpm)	10 - 40	10 - 40
Tablets/hr.	27,000 - 108,000	21,600 - 86,400
Filling depth 1 / 2 (mm)	1 - 6 / 4 - 15	1 - 6 / 4 - 15
Tablet thickness (mm)	0 - 8	0 - 8
Body dimension (W×D×Hmm)	1,010×1,010×1,836	1,010×1,010×1,836
Body weight (kg)	2,800	2,800
DC cabinet dimension (W×D×Hmm)	640×550×1,825	640×550×1,825
DC cabinet weight (kg)	310	310

Our policy is one of continuous development and improvement and we reserve the right to alter dimensions and specifications without prior notice. The photographs include special specifications.

U.S. Subsidiary **KIKUSUI USA, INC.**

1650 Oak Street, Lakewood, NJ. 08701
TEL: 732-349-3131 FAX: 732-349-3354

Manufacturer **KIKUSUI SEISAKUSHO LTD.**

104, Minamikamiai-cho, Nishinokyo, Nakagyo-ku, Kyoto, 604-8483, Japan
TEL: +81-75-841-6326 FAX: +81-75-803-2077