

▼ **STAINLESS STEEL DRAIN AND TRAPS**



▼ **STAINLESS STEEL PALLET**

- 1200 L 1000 W 150 H mm.
- 1200 L 800 W 150 H mm.
- Load capacity 1 ton.



▼ **STAINLESS STEEL 316 POWDER SAMPLER**



▼ **STAINLESS STEEL HYDRAULIC PALLET TRUCK**

- Load capacity 1 ton.
- Manually operated
- Load capacity 2000 kg.
- Dimensions 1180x520x1100 mm.



**NICOMAC**



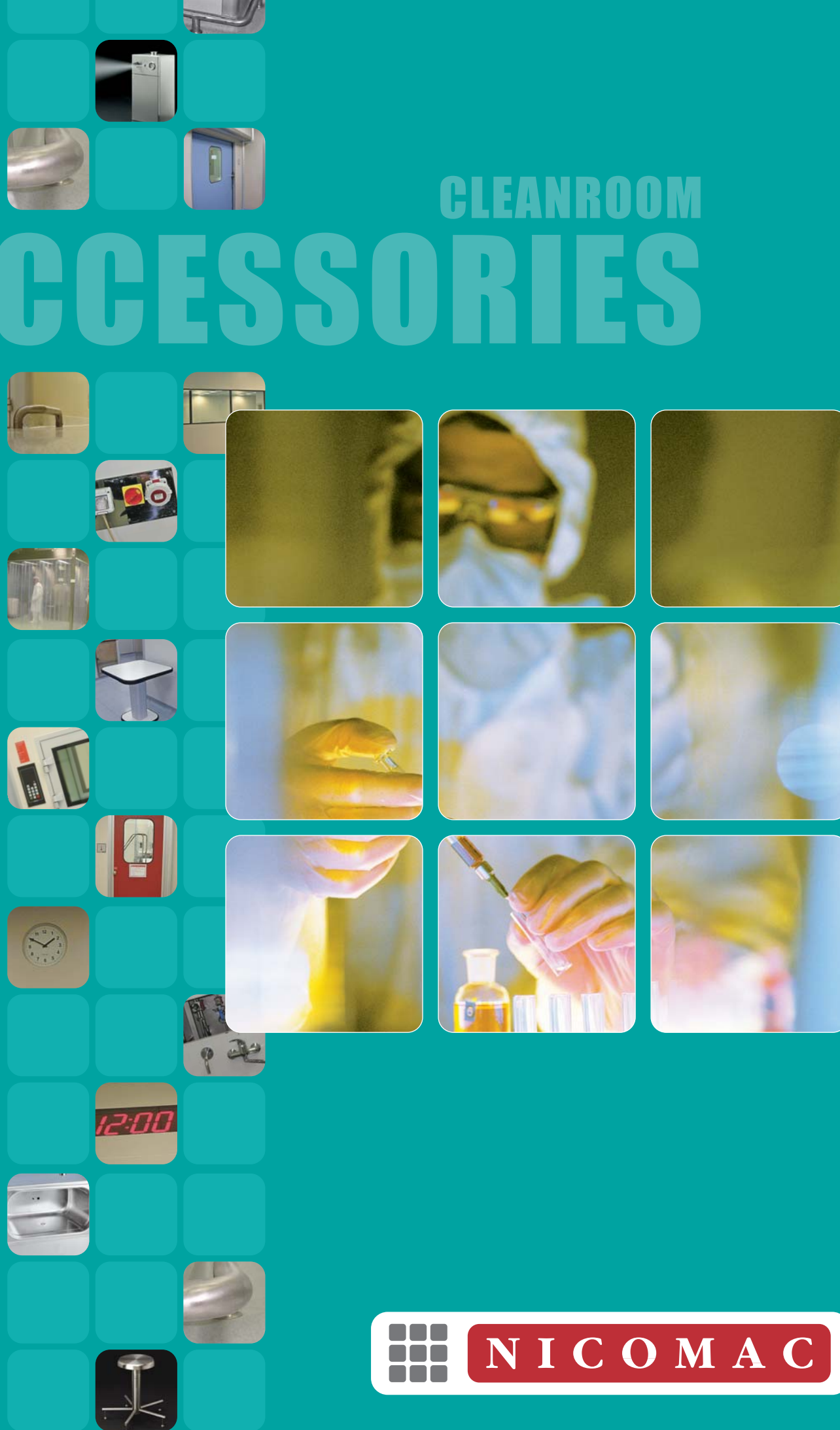
**ADDRESS**

**NICOMAC SRL** •  
 via Curiel, 12 - 20060 Liscate (MI)  
 Phone +39 02 95 42 04 1  
 Fax +39 02 95 42 04 44  
 www.nicomac.com  
 E-mail: sales@nicomac.it

**NICOMAC INC** •  
 80 Oak Street  
 Norwood, NJ 07648  
 Phone +201 768 9501  
 Fax +201 768 9504  
 E-mail: salesUSA@nicomac.com

**NICOMAC FAR EAST** •  
 502325 Hyderabad - India  
 Phone +91 40 30914113  
 Fax +91 08458-279790  
 E-mail: nicomac@sify.com

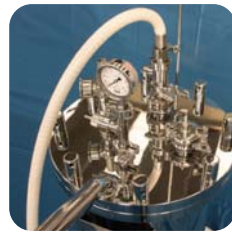
CLEANROOM  
**ACCESSORIES**



**NICOMAC**



# CLEANROOM ACCESSORIES



## ▼ STERICLEAN

System for cleaning and biodecontamination of surfaces according to 97/23/CE "Pressure Equipment Directive" (PED)

### ▼ Characteristics

- Autoclavable
- All surfaces in contact with liquids are in AISI 316L Stainless steel mirror finishing Ra  $\mu$  0,5
- Classified for liquids class 1 and 2
- To be pressurized with compressed air or nitrogen (depending on the liquid used) when in use, no pressure connection is required
- AISI 316L Stainless steel gun with special nozzle for atomization
- All accessories are designed for use in sterile areas
- No electrical connection required
- Time required for cleaning is greatly reduced
- 25 litres capacity
- CE certified



## ▼ DECONJET

NICOMAC atomizer for Cleanroom biodecontamination. Designed for regular and periodic Cleanroom fogging, the materials used and the finishing are designed for pharmaceutical sterile areas.

- Each DECONJET is suitable for 100 m<sup>3</sup> and it allows quick fumigation time.

### ▼ Connections

Deconjet is supplied with compressed air or nitrogen to be filtered in accordance with the class of the room where Deconjet is installed. The front space fits up to 5 liters container (not included). No electrical connections required.

### ▼ Features

- AISI 304 Stainless steel Scotch Brite finishing
- Pressure control
- Manometer
- Chromium plated brass atomizer
- Internal space for a 5 liters liquid container
- Supply: compressed air or nitrogen (0,22  $\mu$  filtration is recommended)
- 1 1/2" clamp for ceiling connection

### ▼ Size

- Length 250 mm.
- Depth 230 mm.
- Height 508 mm.
- Weight 6 kg. (empty)

Pressure	Liquid sprayed	Time
1 bar	100 ml	8' 40"
2 bar	100 ml	1' 55"
3 bar	100 ml	1' 25"



## ▼ SPRAYCLEAN

Nicomac SprayClean is an automatic atomizer for gloved hands' disinfecting. Fast, effective, easy cleaning system for CleanRoom. No drainage system required.

Completely in AISI 304 Stainless steel. Scotch brite finishing. To be installed in lockers room, it guarantees a fast and safe gloves' disinfecting and it reduces gloves consumption. Low disinfectant consumption, about 5 ml each time. An automatic infrared sensor detects the presence of the gloved hand and releases the alcohol based disinfectant. SprayClean tank has a maximum capacity of ml. 700; a double LED warns about minimum level and, during filling, maximum level, an alarm informs the operator when liquid has to be filled up. "Built in" Nicomac wall system available.

- Width 340 mm. Depth 260 mm. Height 290 mm. Weight 6,3 kg.
- Power supply: 230V
- Low tension: 12Vcc
- According to 89/336/CEE Standards
- CE Certified.



AISI 304  
Stainless steel basin



Stainless steel plate  
for sockets





# BENCHES, LOCKERS, CLOCKS AND BUMPERS



AISI 304 stainless steel bench



HPL bench and recessed flush mirror



Lockers

HPL - High pressure laminate bench



Sliding door



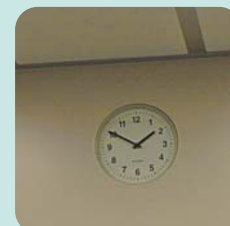
Profile for door installation on brick wall



Stainless steel door profile



Bumpers



Analogic clock



Digital clock

# BUMPERS



Continuous glazing



## ▼ NICOFLOW

Nicomac Laminar Flow custom designed for dispensing room with high pressure laminate or stainless steel structure, Hepa filter, control system.

## ▼ PASS THROUGH BOX INTERCOMS

Material pass through with high finishing, interlocked, U.V. lights, tight doors, flush intercom system.



Atex explosion proof light





## ▼ STAINLESS STEEL CHAIRS AND STAINLESS STEEL STOOL

Dedicated ergonomic design and finishing for sterile area.

AISI 304 Stainless steel chair and stool can be easily dismantled to allow single cleaning and fitting elements into small autoclaves.

- Adjustable seat and back height
- Telescopic seat adjustment system
- Five legs base, with Stainless steel or polyurethane coated wheels

Minimum seat's height 480 mm.  
Maximum seat's height 560 mm.



Stainless steel chairs



Stainless steel stool

## ▼ TOPDOWN TAB

Folding table for CleanRoom.  
High mechanical and scratches resistant material.  
A folding table for technical documentation. Less space required.  
Standard dimension 600x1440 mm.



## ▼ NICOWIN TABLE

High pressure laminated square table. Nice ergonomic design, no sharp corner, aluminum basement. Overall safety black gasket. High mechanical and scratches resistant material. Sandwich panel with two 4 mm. layers; 45 mm. thickness. Easy to clean. Very stable. 950x950 mm. height from 700 to 1000 mm.



## CLEANROOM CLEANING SYSTEM

A complete range of products, for all cleaning needs in pharmaceutical sterile environments.

All these items are dedicated to sterile areas use and can be sterilized in autoclave.

### ▼ SQUIZZY

- Mop with sponge, AISI 304 stainless steel ergonomic handle can be dismantled in two parts, electro polished easy sponge assembling/disassembling system with hook squeezing device
- Squeazy sponge can be re-used, durability depends on the type of detergent
- Squeazy refill sponge, colour may change depending on batch

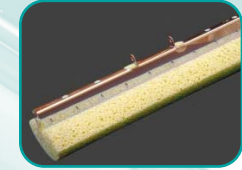
### ▼ CLEANUP

- Spatula mop
- Ergonomic handle in AISI 304 stainless steel can be dismantled in two parts
- Autoclavable
- Silicon blade can be easily dismantled



### ▼ DUSTY

- Electro-polished, AISI 304 stainless steel Dustpan
- Ergonomic handle in AISI 304 stainless steel can be dismantled in two parts
- Autoclavable



### ▼ DUOFLIPPY

Flat mop - handle mm. 1400  
Flat mop - handle mm. 1700

- Flat mop in AISI 304 stainless steel for floor and ceiling
- Autoclavable
- Head shape guarantees a full adherence of the wipe to the surface
- Easy open system on mop head for wipe fitting
- Ergonomic handle in AISI 304 stainless steel can be dismantled in two parts

### ▼ BAGGY

- Waste-bag holder in AISI 304 stainless steel
- Autoclavable